

Arizona Poison and Drug Information Center

Poison Control 101

Laura Morehouse, MPH CHES
Community Outreach Coordinator

ARIZONA
Poison and Drug
Information Center



 1-800-222-1222



Arizona Poison Center





Back in the Day...

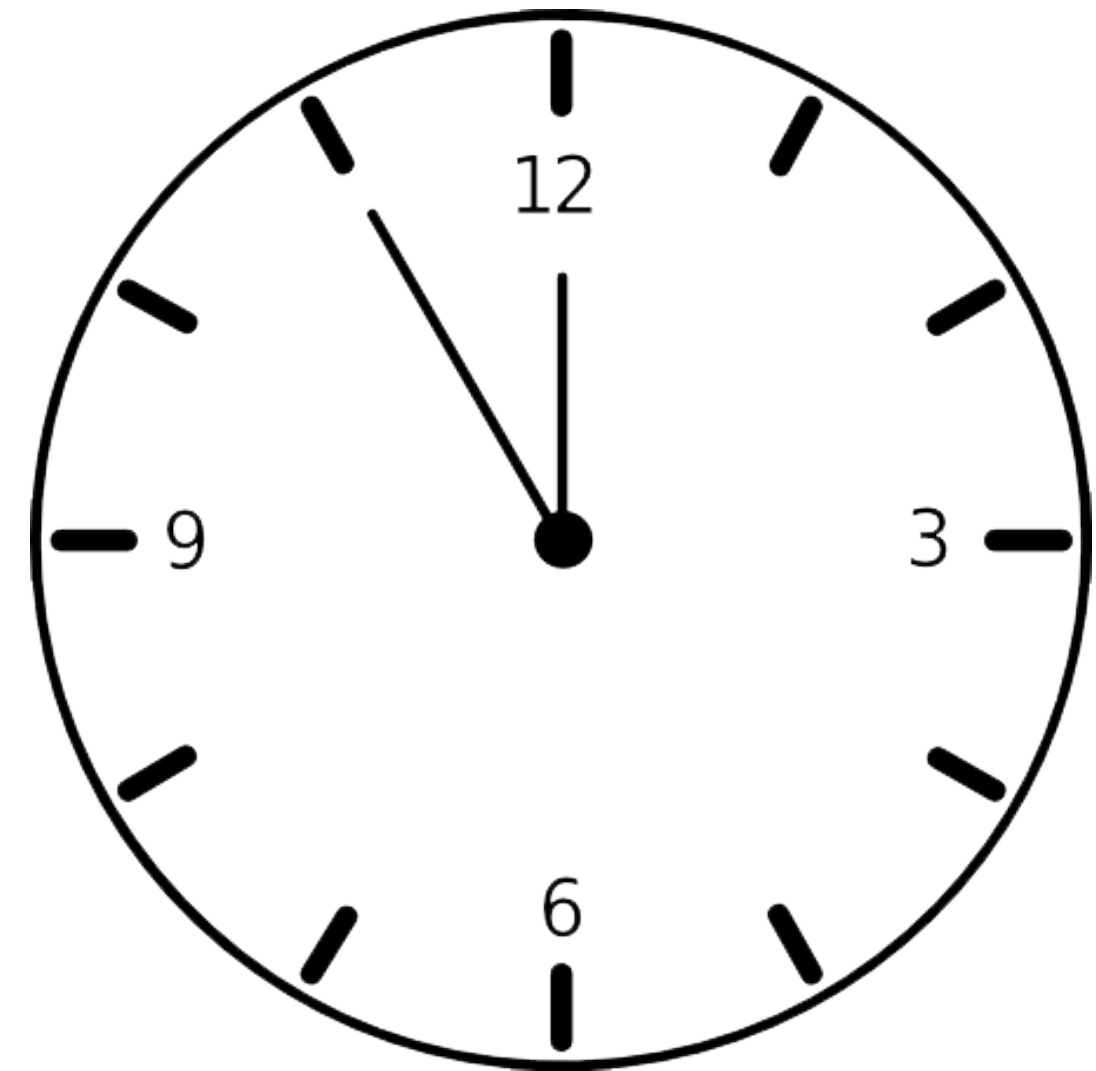
- 1953: First center established in Chicago
- 1955: Tucson center established

Purpose: Front line responders to poison emergencies

American Association of Poison Control Centers (AAPCC)

National Poison Data System (NPDS)

- A near real-time snapshot of poison call conditions nationwide
- The only nationwide poisoning surveillance database in the US
- Combined effort between AAPCC and the CDC





Poison Help Line

1-800-222-1222

- Poison Control Enhancement and Awareness Act (2000)
- Funding to create single toll-free number
- Routed by area code

Poison control at your fingertips.

Text POISON to 797979
to add poison control as a
contact in your mobile phone.



BE PREPARED ANYTIME & ANYWHERE WITH #POISONHELP





Poisonings can happen
to *anyone*, so poison
centers are for *everyone*

How do poison centers help?

- Open 24/7/365
- Free
- Confidential
- Over 150 languages
- Medical experts



Arizona Poison Center

- >30,000 calls/year
 - 60% of calls are poisoning cases
 - 40% of calls are information requests
- Serves 14 counties in Arizona
 - All counties except Maricopa, which is served by a separate poison center

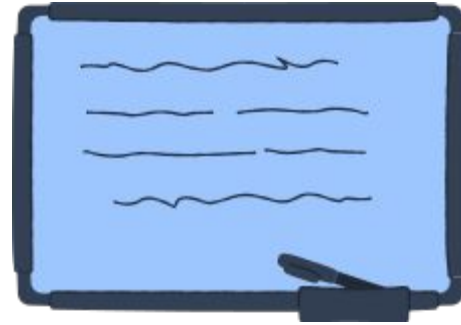
Services



Research



**Healthcare
Providers**



Public Education



**Emergency
Preparedness**



**Toxicology Teaching
Site**



- Approximately 70% of PCC cases are managed at home.
- Of those, 70% would have gone to the ER if a poison center was unavailable

Total savings: \$26 million/year

Other savings:

- Shorter hospital stay
- Less work-loss days
- In-person outreach

Cost Benefits

Impact for Older Adults

- Drug safety counseling
- Exposure management
- Cannabis safety





By the Numbers

Over 2,200 exposures involving older adults (65+) are reported annually to the AzPDIC.

Over 6,700 drug information calls handled by our pharmacists annually.

Drug Safety Counseling

What information do we provide?

- Drug-drug interactions
- Unsafe medications in older adults (Beers Criteria)
- Home and hospital management
- Adverse drug events

Home & Hospital Management

Accidental extra doses



Keep safe ingestions out of
the emergency department

**Save costs for patients and
insurance companies**



Send unsafe medication errors
to emergency department

**Potentially life-saving
management**

Adverse Drug Effects

Between 2007-2009, an estimated 99,628 ADE-related hospitalizations occurred annually among individuals 65+

- Two thirds of hospitalizations were due to unintentional overdoses
- Four medication classes were implicated in 67% of hospitalizations
 - Warfarin
 - Insulin
 - Oral antiplatelet agents
 - Oral hypoglycemic agents



Cannabis Safety

One of the few sources offering drug-drug interaction information for cannabis and prescription and over-the-counter medication.

Approximately 63,658 adults (60+) in Arizona have a medical marijuana card.

Likely even more try recreationally.

Adverse drug reactions are responsible for 3-10% of all hospitalizations annually among older patients.



Questions?

Contact Information:

Laura Morehouse

morehouse@pharmacy.arizona.edu

(520) 626-6165